

January 2025



NEWS & EVENTS FROM COLLINGHAM, HAREWOOD & LINTON

brought to you by St Oswald's Church



Proud parents Caitlin and Chris,
with big sister Charlotte, with baby Laurence
at his Christening in St Oswald's

In our Churches

Preparing for Christmas at Teddy Praise



The Christingle Service on 8th December

From the Vicarage



What will you be doing to 'bring in' New Year? Will it be partying, or snoozing, getting over the night before, or stepping out into the newness of it all with vigour and determination? I recently read the following advice: - "*You've got a whole 365 days ahead of you, so feel free to pace yourself and start the year off slowly, with enjoyable yet relaxed activities!*" Sounds like good advice to me or is my appreciation of these sentiments simply a sign that I am older than I once was?!

New Years can come at us in many ways. Some of us will know what lies ahead, or at least think that we do, and some of that might be events and activities which we are looking forward to and intend to embrace with open arms. Others of us may feel that the months ahead will include things we consider to be challenging, or daunting even. Most of us, if we are honest, walk something of a tightrope between our desire for something familiar and our desire for something new. One of the ancient, and to some familiar, prayers of the church is one set for Compline, or for the end of the day. It says this...

*"Be present, O merciful God,
and protect us through the silent (or noisy) hours of this night (or day),
so that we who are wearied by the changes and chances of this fleeting world,
may rest upon your eternal changelessness..."*

There are parts of that prayer which I would happily adapt – as I already have, above. Why does it need to only be a prayer for the end of a day – why not the beginning of a day, or a New Year? There are also words I might want to insert – like the word '*frantic*' alongside '*fleeting*' to describe our whirlwind of a world, or the word '*worried*' alongside '*wearied*' to describe our potentially agitated responses to those '*changes and chances*' which can lift us and drop us in equal measure. But the prayer brings us to its conclusion, '*resting upon (the) eternal changelessness*' of God. A God who is changeless might, for some, raise further questions. For me, the answer as to what is this changelessness of God, is given in the opening words of the prayer. We can rest in **God's changelessness** because **God is ever present** and **ever merciful, as well as eternal – or everlasting**.

However we step out into **2025** – with light or heavy hearts, a spring in our step or dragging a comfort blanket behind us, let us step out knowing we do not face life's '*changes and chances*', the lifts and the falls of our journey, alone or unloved. We can rest in God's eternal and merciful and changeless presence. We may have put away our carol sheets with their words of "*O come to us, abide with us, our Lord Emmanuel!*" But Emmanuel means '**God is with us**' and that is a truth which is **changeless and abiding!**

Love and Blessings to You All this New Year
- Carolyn (Vicar)

Village Groups and Societies

Collingham Retired Men's Forum

Our forum 2024 ended on a high note. We are amazed at the quality of the speakers that we inveigle into coming to entertain us . They seem to enjoy joining us for a few have been several times. Our latest was Patti Gold who is the complete song and dance girl and has been active since the age of three . She has sung and danced for quite a few generations hitting the heights with presenting Saturday Night at the London Palladium and is married to Stuart Atkins. You may recall that Stuart was the main man at the famous Batley Varieties . Stuart has spoken to us before . This time it was Patti's turn.

It seems that there are few stars that she hasn't performed with and she spoke warmly of each. It shone through that her favourite was " Our Gracie ", Gracie Fields whom she knew well . The security guy at Batley had a ferocious and quite vicious guard dog , Knowing that he wouldn't be able to watch Gracie perform , on account of his being on duty , he asked if he may watch the rehearsal but warned the star about approaching the dog . " Nonsense ! " She dared to tickle the beast under the chin , and it lay on stage mesmerised by Gracie. Just a silly story but such fun. We enjoyed Patti.



The Bridge Inn hosted our Christmas Lunch which was very enjoyable. The room there is brilliant when the sun shines as it generally seems to do . So we are looking forward to continuing to meet at the Methodist Church Hall at 10 on Tuesdays. It is great to see new members turn up but , sorry, chaps you missed the mince pies. Just coffee , tea and biscuits for now.

We return in the New Year on Tuesday 7th January.

Patrick Dawson .

Social Events at Collingham Methodist Church Hall

- | | |
|----------------------------|---------------------------------|
| Friends and Flowers | Tuesday 7th January at 2pm. |
| Bacon Brunches | Monday 13th January at 10.30am. |
| Coffee and chat | Monday 27th January at 10.30am. |

Whist on Wednesday is temporary cancelled, due to lack of participants. If you would like to meet for whist, or perhaps learn how to play, please contact Pastor Eileen for more details. Another opportunity to meet with friends and make new ones.



Linton Antique Society



Fine Art Printing

Thursday 9th January at 8pm

an on-line talk by

Daniel Pegg of the Penfold Press

Daniel has been printing fine art prints at his studio for over twenty years, working closely with a range of contemporary artists, including Mark Hearld, Angie Lewin, Angela Harding and Clive Hicks-Jenkins.

In this Zoom presentation he will be speaking live from his studio. He will talk about the various techniques he uses and how such creative collaborations develop, with particular reference to a series of prints created with the artist and illustrator, Emily Sutton. A fascinating insight into a thriving corner of the art world.

You can become a member of the Society for just £30, individual, and £55, joint, which gives access to all the presentations during the season. You can join through the Society's website www.lintonantiquesociety.org.uk or by contacting the Membership Secretary on 0113 345 1815. Non-members are welcome: the entrance fee is £10, which counts towards the membership fee if you join on the same night.

Magazine by Post

If you live beyond the distribution area, or move away and want to keep in touch, there is a 'Magazine by Post' service where the Magazine is posted out to anyone who is registered on the scheme.

If you would like this service, or know someone who would - please register, or re-register for the forthcoming year. To do this please send 11 2nd class stamps, one for each issue, to the Editor at Brigham, School Lane, Collingham, LS22 5BD





Collingham Scout Group

Do you have skills or time that could help us?

We are looking for people in our local community who can help us in a variety of ways.

The Scouts nationally has just completed a programme to make volunteering much more flexible, so whilst we are always looking to welcome any adult volunteers who would like to be part of a team running one of our Sections (Beavers, Cubs or Scouts), we have lots of other opportunities for people to help us behind the scenes and would love to have more people from the community in our wider team.

So, **if you can help us** with things like admin (e.g. enquiry emails/waiting list, badge records), IT (Microsoft or website), training, recruitment, ordering supplies, safety advice or looking after our Scout Hut, then please get in touch at 1stcollinghamscoutgrp@gmail.com or contact Colin Taverner on 07972 228287.

As a Scout Group we are a financially self-sufficient Registered Charity and are **looking for Trustees for our Charity Trustee Board**. If you would be interested in being involved with the Scout Group in this way, please get in touch. This is ideal for people who don't want to be on the 'front line' with children, or for people who have an ambition to have a career as a non-executive director in the future; charity trustee roles are a good way to gain some early relevant experience.

Collingham Scout Group aims to provide a wide range of fun and adventurous activities to **both boys and girls** aged between 6 and 13 through Beavers (6-8), Cubs (8-10) and Scouts (10½-13) Sections (with Explorer Scouts (14-17) available in Wetherby).



If you are interested in helping the Scout Group in Collingham in some way as an adult volunteer or would like to enquire about membership for your child, please email

1stcollinghamscoutgrp@gmail.com

More pictures on back cover.

Linton News

With Shirley Lawrenson

Happy New Year to all our readers. We do hope that you find the magazine informative and that it helps to bring our villages closer together.

Lets hope the wreaths made at the local class are resplendent as always, and help with the lights and all the other decorations to make festive atmosphere. The season got off to a good start with the lovely Christmas Fayre. Many thanks to the Fundraisers, who have been celebrating 13 years, providing much needed cash to help the village and the Memorial Hall. The hall is as you all realise a great asset to our locality; if any of you would like to join the committee you would be most welcome. Our next meeting is on Jan 28th. Please phone Sephton or any committee member, if you would like to come along.

As I write we have been experiencing a very cold snap which didn't seem, fortunately to impact too much on the fair. *"Ice in November to hold a duck. Theres nothing to follow but slush and muck."* This old adage can now be tested against Global Warming!

It was very alarming to see the ridiculous speeding on the lane. Do these drivers not realise that the narrow road is used by cyclists and young children on bikes as well as walkers? The speed restrictions are there for a reason.

The antique society meetings are on line for January and February but the intrepid Ladies Walking Group will be out on the 3rd Friday of the month.as usual with a, hopefully, non muddy option.

The Coffee mornings on the 3rd Thursday continue at the Windmill.

LINTON MEMORIAL HALL – Weekly Activities

All bookings and enquiries – Adele – 07899 841963 or bookings@lintonmemorialhall.org

Cherry Tree Montessori Nursery	Denise Naylor Julie Curtis	Mon, Wed & Fri 09:00 - 13:00 Tues & Thurs 09:00 – 15:00	01937 586227
Yoga	Shirley Wood	Monday 19.30-21.00	07787842150
Pilates	Lindsey Jackson	Wed 09:00 – 12 noon	01937 520174
Antique Society	Judy Cooper	2 nd Thursday in every month	0113 3451815
Tennis Club	Chris Wood	By arrangement	01937 586318
Creative Re-enactment Society	Lesley McNee	Wednesday 18:30-21:30	Private Booking
Baby Ballet	Doreen Ladley	Monday 15:00 – 17:00	07970 218941
Speaking Group	Chris Clisseett	Alternate Thursdays	07976359129
Tango Dance Class	Antony Tabor	1 st Friday in month	07747258800



Collingham School News

This half term is always one of the busiest in the year, it became even busier with a SIAMS inspection (This is the Statutory inspection of Anglican and Methodist Schools (SIAMS) by the Church of England Education Team.) This was the first inspection of Collingham School 2017. The results of the inspection report were extremely positive. I have included just a few of the statements.

“This school is a calm and happy place. A tangible sense of love, acceptance and nurture greets you as you step into the playground. The school’s distinctively Christian vision is a natural articulation of life within this inclusive school”

“Parents are comfortable to approach the school and are confident that they will be listened to. They speak of feeling part of the school even before the child has joined it.”

“Big questions, encouraging deep thinking and discussion, are a regular part of daily learning. This supports pupils to grow as curious and thoughtful learners.”

“A focus on spirituality, diversity, initiative and environment shines throughout it. This reflects the school’s Christian vision and its aspiration for all.”

December focusses on Advent and Christmas. There are a great deal of activities within school and away from school. The younger children in Key Stage One had a great adventure and went to the Leeds Playhouse to a performance of Mr Snow.

“Mr Snow is a beautiful story full of joy, wonder and hope. It’s a fun festive adventure about being together with the ones we love – whether they are family, friends or our favourite teddy bear.” The entirety of Key Stage Two children went to the Leeds Play House to see ‘The Lion the Witch and the Wardrobe’. This was a wonderful opportunity for everyone to go to the theatre together and to experience the joy and excitement of such a performance. The children were simply engrossed in the spectacle of the actors, set and music.

As I write this, the children are busy preparing their Christmas performances. These are loved by the children, staff and most of all by the parents, carers and grandparents. They are part of the tradition of the school. It also gives the children an opportunity to help those less fortunate within the community.. There will be collections at the end of each performance to raise money for their chosen charities of Zarach and South Leeds Salvation Army.

The children will also attend Christmas Services at St Oswald’s to hear the Christmas story and focus on the true meaning of Christmas.

The term ends with the children’s Christmas Parties. This is an opportunity to let their excitement bubble over and have fun.

Finally, the handbell ringers from school, made their debut performance at the Christingle Service. It was a brilliant effort and was enjoyed by everyone at the service. Keep up the great work!



Mary Wood (Chair of Governors)



Royal British Legion

ROYAL BRITISH LEGION The total raised in this years poppy appeal within the Collingham and district area is £5798.25 this total is raised from Collingham and surrounding villages. Within this amount £1278.62 was raised by our local schools. Collingham school collected £207.29 which was a brilliant eort. I would like to thank everyone concerned for their contribution to the welfare of our armed forces.

Sephton Baxter. Poppy Appeal Organiser

Church News

TWO OPPORTUNITIES FOR LOCAL CHRISTIANS TO COME TOGETHER
DURING

THE WEEK OF PRAYER FOR CHRISTIAN UNITY 2025

Sunday 19th January at 10.30am

St Oswald's Church Family will be joining with our Methodist friends to worship with them at Collingham Methodist Church, for their

Annual Covenant Service.

and

Thursday 23rd January at 7.30pm

'Churches Together' Service & AGM

Is, this year, at St Joseph's Roman Catholic Church, Wetherby

Our Speaker will be from the Charity

'Caring for Life'

ALL WELCOME

Who is Who in our Churches

St Oswald's Church

Vicar: Rev'd Carolyn James 01937 573975

Carolyn.james117@btinternet.com

Churchwardens: Tim Wood 01937 579805

st.oswalds.churchwarden@gmail.com

John Newby 0113 2886389

John.newby@btinternet.com

Facebook: Collingham with Harewood parish

Website: www.collinghamwithharewood

The Methodist Church

Eileen Clarkson, Lay Pastor. Email: eileencoombe@hotmail.com

Please contact Eileen if you would like to book the Methodist Hall

JANUAR SERVICES & ACTIVITIES @ ST OSWALD'S

All are most welcome to the church's regular or occasional events

DATE	TIME	SERVICE
Wednesday 1 st January	-	NO MIDWEEK EUCHARIST
Sunday 5 th FEAST OF THE EPIPHANY	8.30am 10.00am 12 noon <u>4.00pm</u>	Holy Communion (BCP) Sung Eucharist for Epiphany Baptism Epiphany Season Carol Service
Wednesday 8 th	9.30am	Eucharist (<i>said</i>)
Friday 10 th	10am – 11.30am	'Teddy Praise'- <u>Methodist Church Hall</u> <i>Story, Activity, Song & Fun for pre-schoolers and carers</i>
Sunday 12 th Baptism of Christ	8.30am 10.00am	Said Eucharist Sung Eucharist
Wednesday 15 th	9.30am	Eucharist (<i>said</i>)
Sunday 19 th Epiphany 2	8.30am 10.30am	Said Eucharist <u>Joint Service at Collingham Methodists</u> <i>NB No 10am at St Oswald's</i>
Wednesday 22 nd	9.30am	Eucharist (<i>said</i>)
Thursday 23 rd	7.30pm	<i>Week of Prayer for Christian Unity</i> Service & AGM @ St Joseph's RC Church, Wetherby.
Sunday 26 th Epiphany 3	8.30am 10am	Said Eucharist <u>All Age Worship</u>
Wednesday 29 th	9.30am	Eucharist (<i>said</i>)
Friday 31 st	9.30am	Year 4, LEH School Worship
Sunday 2 nd FEBRUARY CANDLEMAS	8.30am 10.00am	Holy Communion (BCP) Sung Eucharist for Candlemas

HAPPY NEW YEAR TO YOU ALL!

From St Oswald's Registers:-

Funeral:

Friday 22 nd November – Claire Louise Ghelfi

Friday 13 th December – James Frederick Farrington



From the Methodist Church



Letting Go

An eagle once flew down to the ground and picked up a mole and held it in its talons. This was unusual as eagles fly high and dive down for fish and other things, but not moles. The eagle went soaring to a great height, holding the mole close, carrying it tightly to its chest. After a while, the strong eagle became tired and weary and began to fly lower and lower and came to rest on the ground before it lost all of its strength, then fell over and died. Losing its grip on the mole, the little creature, still alive, was able to scurry off. According to a veterinarian, whilst the mole was being held tight to the eagle's breast, it had very subtly bitten into the eagle's chest and had pierced the eagle's heart, causing it to lose blood pressure. The eagle had not realised at first, but that is why it began to lose its energy. Life drained away and it died.

How often do we hold onto something which over time drains away our energy making life so much more difficult? We have all experienced pain and difficulties in our lives. Really, we have 2 choices. We can 'hold on' to the pain, hurt and disappointment or we can 'let go' and move on with our lives. Someone once said, "If you don't heal from the emotional wounds, you will bleed on people that had nothing to do with it". How many of us are holding on to the wounds from years ago which are affecting our lives and relationships now?

It is not easy of course, and only God can help us. He is our healer and as we look to Him and leave the situation in His hands, we will then find peace. By forgiving and letting go, we can be healed, and then we shall see fresh opportunities, new relationships and have a future, rather than being the 'walking wounded' for the rest of our lives. And it's not just the big things, but the little ones too.

Like the eagle, I wonder what we have that is piercing our heart, draining our energy, removing the love, joy and peace from our lives?

At the start of another year, we do not know what the coming months will bring but let us not hold on to things which are not good for us. Why not turn to God today and ask him to help us to 'let go' of all that is holding us back and then we can soar high and reach the full potential God has in store for us.

May you have a happy, healthy and peaceful new year.



God bless

Eileen



January News Update

Wishing you a Merry Xmas and a Happy New Year

We would like to take this opportunity to thank everyone who has helped keep our villages looking good this year including: our contractors; Sephton and Richard Baxter, Chris Parks, Julian Varley, Azure Tree Services, Continental landscapes and Brian Hancock and Team; our volunteer litter pickers and Jennifer Rogers; our tree and lighting team in Linton; Martin C, Martin W, and Brian H; our Linton volunteer plant waterers Suzanne and David; and Sharon G for all her work on Facebook and on Collingham Lights.

We would also like to thank all volunteers who have successfully secured grant monies and are running coffee mornings and luncheon clubs to help in the community. We appreciate the support from all Parish Residents, and we look forward to working just as hard for you in 2025.

Collingham Christmas Lights

Thank you also to all the volunteers who assisted with the Christmas lights switch on and as always to Lisa at 1066 for the kind donation of mince pies- they were loved by all! Thank you also to the band who entertained an audience of about 40 inside the Memorial Hall and to all who attended despite the blustery weather.

Station Lane Footbridge

If you are not on Facebook, you may have missed the news of the refurbishment and repair of the Station Lane Footbridge. The Parish Council made the decision to adopt and repair this bridge in November and works started with our chosen contractors in December. The bridge is likely to be closed for one week while the work takes place.

Hoops and Goals to be installed at CaLSA

At December's Parish Council meeting, Councillors approved spend on new play equipment to be installed in the Spring of 2026. This will include a basketball hoop, new goals and updated surfaces, in the area previously considered as a site for a multi-use games area.

Collingham Play Area

A reminder that following this year's play area inspections significant improvement works has been approved by full council. This order has been placed with the supplier and we are waiting for the materials required to be confirmed before works will start.

Phone box Library

We are still seeking volunteers to adopt the phone box library in Linton. It requires regular sorting, and light cleaning, to keep the choices relevant and provide turnover of stock. If you would like to help, please contact our clerk, Claire, see the address below.

Speeding Vehicles

Speeding continues to be a problem that concerns the Parish Council and many residents. The speed indicator device (SID) adjacent to Piccolino's has been faulty so that those figures were not included in last month's update. The relevant figures from the Wetherby Road north (Piccolino's) SID from October to November are that the total number of vehicles exceeding 30mph was 20.57%. No cars exceeded the national speed limit with most of those speeding travelling between 30 and 40 mph, fewer than 1% exceeded 40 mph. All speeding is of concern, but this does show a reduction in the numbers speeding which was 24% in Spring of this year.

Our aim remains to remind and inform drivers when they have exceeded the speed limit, as well as to collect data about the volume and speed of vehicles. We have received suggestions via Facebook that speed cameras should be fitted. Unfortunately, we have asked for this to be considered but our roads do not meet the criteria required.

Our data helps us to demonstrate the severity of the issue to the Police and local authorities with whom we share the figures and supports the use of mobile speed enforcement vehicles in the area. As previously reported, permission has now been granted for a permanent hard standing on Harewood Road to provide another spot for the mobile speed enforcement vehicles.

Council Team News

We would like to offer our thanks for his years of hard work on the Parish Council to our departing vice-chair Julian Holmes. His input has been invaluable.

Marianne Moses was appointed vice-chair at our December meeting, and we wish her all the best in her new role.

Have you ever considered joining the Parish Council? The Parish Council has vacancies for Parish Councillors and we would welcome any residents who would like to join us in the new year. In the first instance please contact our clerk Claire Cooper: clerk@collinghamlintonparishcouncil.gov.uk

If you have interests in helping in any area, please contact the clerk. We may be developing specific working groups that you might wish to join.

Bridgewood Green

Miller Homes has provided the following contact details.

Senior Site Manager – John Rowan 07743 976 066

Head Office – Emma Wigham on 0870 3364600

Assistant Site Manager – Martyn Wilson on 07742405556

Miller Respect Help Line 08000836867 (Out of Hours)

Ward Councillor Ryan Stephenson remains the main point of contact should your query not be resolved: 11 ryan.stephenson@leeds.gov.uk

Crime Prevention

The crime statistics for September were: Linton. Three anti-social behaviour and three violence or sex offences; total 6 crimes reported. Collingham. One public order, one violent or sexual and one other crime; total 3 crimes. Dark nights can make it more obvious when houses are left empty. Please look out for your neighbours when they are away. Report anything suspicious. See the police website for other tips on crime prevention:
[Advice and information | Police.uk \(www.police.uk\)](http://www.police.uk)

Gully Link

Highway gullies are the drains covered by a metal grid, usually found at the edge of a road. From time to time, they get blocked, particularly at this time of year. You can report them directly to the Leeds City Council Highways team using the following link:

<https://www.leeds.gov.uk/environmental-health/drains-and-gullies>

Useful Flood Contacts:	
Environment Agency Incident Hotline (24hrs a day) Please report any concerns with assets or blockages to a watercourse through the Incident Hotline so it can be logged and sent to the right team to deal with.	0800 80 70 60
Check for flooding	Check for flooding - GOV.UK
Prepare for flooding	Prepare for flooding – GOV.UK
Local and national weather information including weather warnings.	www.metoffice.gov.uk
Flood Re can help people who live in a flood risk area find affordable building and contents insurance.	Flood Re - A flood re-insurance scheme
The National Flood Forum provide further advice and support on a range of flood topics.	www.nationalfloodforum.org.uk
Property Flood Resilience Toolkit The Flood Hub. This toolkit contains all the resources you need as a basic introduction for your property to become more flood resilient.	Property Flood Resilience Toolkit The Flood Hub
Bluepages – UK Independent Flood Directory	Blue Pages
Your Local Resilience Forum - tips to help you and your community be prepared for a range of emergencies, not just flooding.	West Yorkshire Local Resilience Forum
Yorkshire Ready Together – a conversational tool to help you be prepared and ready for all types of emergencies.	Yorkshire Ready Together chatbot
Communities Prepared – Information and Training for Emergency Response	Communities Prepared – A Groundwork South Project



Parish Council Facebook Page

The Parish Council has its own Facebook page: **Collingham with Linton Parish Council**. We post information regularly about the work we undertake and publish information about issues affecting Collingham and Linton.

Website

For further details and information about the work of the Parish Council, please go to www.clpc.info

Collingham Memorial Hall

ACTIVITIES

- Art Group
- ArtVentures for Kids
- Badminton Clubs
- JMF Dance School
- Kickstart Kamps
- Ladies Forum
- Martial Arts
- Number Train
- Pre-School Group
- Snooker
- Supper Club
- Tiny Dancers
- Toddler Group
- Union Dance Classes
- Zumba Class

The Memorial Hall has been at the heart of the village for over a century. Plans to enhance and refurbish the building are being put together and we are looking for some additional help to get things moving.

Do you have any special skills to be able to offer help with this exciting project? Funding applications? Project Management?

If so please contact Philip Skelton on 07801 651790 or philipskelton@icloud.com or alternatively leave your contact details on the form on the Hall website <https://www.collinghammemorialhall.co.uk>

Further information available from our website

www.CollinghamMemorialHall.co.uk

Dalby Landscapes

Landscape Gardening, Fencing and Patio Work.
General Garden Maintenance, Weekly, Fortnightly or oneoff Garden Tidy.
All Aspects of Tree Services Undertaken.

Nigel Dalby 07752 586566 /01937 574583 www.dalbylandscapes.co.uk.

**To advertise in this space please contact
Kate Kinsella.**

Email:
st.oswalds.advertising@gmail.com

ABBOTTS OF WETHERBY

PAINTING & DECORATING

07815 011392

D C PLUMBING SERVICES

For all your plumbing issues

No job too small

Call now for your free estimate

Tel 01937 579059

M: 07876 474079

32 Bishopdale Drive, Collingham LS22 5LP

01937 580607
FREE ADVICE &
ESTIMATES

GRAHAM

Landscapes

EVERY THING YOUR GARDEN NEEDS

07752 093361

12 Month Guarantee
£2 million liability cover

Block Paving
Patios
Drives
Paths
Graveling
Concreting

Decking
Fencing
Gates
Garden Walls
Pergolas
Turfing
Shed Bases

NEW Resin Bound Gravel Surfaces
Gutter Cleaning
Power Washing
Patios Repointed
Garden Maintenance
Low Maintenance Gardens
One-off Tidy-ups

THE AWARD WINNING GARDEN BUILDERS

THORNER FLOORING SERVICES

ALL TYPES OF FLOOR COVERINGS
SUPPLIED AND FITTED

CARPETS • VINYLs • WOOD • RUGS

THE MOBILE SHOWROOM

1000's OF SAMPLES BROUGHT TO YOUR DOOR



8 St Peters Garth, Thorner, LEEDS, LS14 3EE
Tel: 0113 289 2344 Mobile: 07774 171744

craig@thornerflooring.co.uk
www.thornerflooring.co.uk



Clearview

the difference is clear

- Window Cleaning • Gutter Cleaning
- Water Softener Sales

Contact 01937 586849

Email: info@clearview98.co.uk

www.clearview98.co.uk

www.clearview-watersofteners.co.uk

PARKER HARTLEY & CO

Incorporated Financial Accountants
*Accounts, Bookkeeping,
 VAT, PAYE, Investigations*
Local collection and delivery service

Weekend and Evening Visits by Appointment
 Free Initial Consultation

Tel: 01904 612455 or 01937 572022

www.parkerhartley.co.uk



COLLINGHAM PRESCHOOL

Collingham Preschool is a trusted early childhood education provider located in the heart of Collingham, Wetherby. With a focus on holistic development, we offer a safe and supportive environment where children can explore, [learn](#) and thrive. Please contact us for more information.

collinghampreschool.com

collingham.preschool@icloud.com

07835 882361



GATEWAYS SCHOOL

Gateways is an independent day school for children aged 2 - 18 years

- ◆ Small class sizes - average class is 14 - 18 pupils
- ◆ Countryside location in Harewood village
- ◆ Excellent academic track record
- ◆ Award-winning Early Years provision

www.gatewayschool.co.uk



SCAN ME



HYLAND BUILDERS LTD
'THE AWARD WINNING BUILDER'

Est 1974

Celebrating 50 years of making a difference

GENERAL BUILDERS.
EXTENSIONS, ALTERATIONS
ROOFING AND GLAZING
CONTRACTORS

**DOMESTIC, INDUSTRIAL
AND COMMERCIAL
SPECIALISTS**

Flat Roof Specialists, Roof Repairs,
Strip and Recovers
Drainage, Drives and Garden walling
Paving – Slab or Block
Fencing and Landscape Gardening
Plastering, Pebble Dashing and Pointing
Guttering and Fallpipes
Painting and Decorating
Security Services
Grant Work – Leeds City Council Approved
*Insurance work welcome for Burglary, Fire,
Flood and Storm Damage*

24 HOUR EMERGENCY SERVICE FOR
GLAZING, PLUMBING AND
BLOCKED DRAINS
ALL WORK GUARANTEED

FOR ADVICE AND PERSONAL ATTENTION

PHONE 01937 572596 (24 hrs)
MOBILE 0771 0099596
10 ROSE CROFT, EAST KESWICK
LEEDS LS17 9HR

*"The impossible we can do
miracles take a little longer"*



LOCKFARR LOCKSMITH & CCTV

NORMAN FARRAR
MPL NATIONALLY TRAINED LOCKSMITH
FULLY TRAINED CCTV INSTALLER

07760111418

norman_farrar@hotmail.com

Find us on Facebook– Lockfarr Locksmith and CCTV

**STEAD
ELECTRICAL**

FOR ALL YOUR ELECTRICAL REQUIREMENTS
FREE ESTIMATES - 24 HOUR CALL OUT

YEB APPRENTICE TRAINED
OVER 30 YEARS EXPERIENCE
PART 'P' REGISTERED
FRIENDLY RELIABLE SERVICE

**PLEASE CALL CHRIS
MOBILE:07812386939**



Mooring Brothers

Chimney Sweeps

**For All Your
Chimney Requirements**

Tel: 01937 843160

www.mooringbrotherschimneysweep.co.uk



YORK PLACE
DENTAL PRACTICE

- Family dentistry
- Hygienist
- Cosmetic dentistry
- Facial Aesthetics
- Anti-Snoring devices
- Online booking available
- Payment plans & finance

3 York Place

Wetherby

LS22 6NZ

01937 583028

hello@ypdp.co.uk

www.ypdp.co.uk





COUNSELLING - ADRIENNE CREW (MBACP)

Registered member of the British Association
for Counselling & Psychotherapy

Counselling can provide valuable support when there is a crisis.

I can offer help with the following;

**RELATIONSHIPS ■ COUPLE COUNSELLING ■ DEPRESSION
BEREAVEMENT ■ WORK LIFE BALANCE ■ ANXIETY ■ ANGER ISSUES
■ LOW SELF-ESTEEM**

T: 07715 267676 / E: adrienne.e2@gmail.com

www.adriennecrew.co.uk

**Tate Oil are a family-run, local fuel
supplier delivering to your area!**

- ✓ Heating oils and fuels
- ✓ Lubricants and additives
- ✓ Oil boiler and tank installation

**Quote PARISH10 for £10 off
your first order!**



Want to place an order? Call 03300 552 889 or visit tateoil.co.uk today!



T&C's apply. £10 discount applies to new customers ordering heating oil only. Promo ends 31/12/2021. Excludes buying groups.

Rosie Nugent

Registered Counsellor BSc (Hons) RGN

**General Counselling specialising in: Bereavement, Health care, and
Pregnancy related issues & loss**

07768 661597

rencounselling@gmail.com

Collingham based



Over 25 Years

Experience

BARDSEY TREE SERVICES Ltd

Tree Surgeons & Arboricultural Contractors

All aspects of tree surgery & felling
Site clearance for Residential & Construction Industry
TPO/Conservation area checks and free applications
Emergency Call Out
£10 million Public Liability

Stump grinding
Woodchip Suppliers
Hedge cutting/removal

01937 573689

www.bardseytrees.co.uk

info@bardseytrees.co.uk



The Village Pharmacy

Collingham Tel 01937 572388

Your **LOCAL INDEPENDENT** Pharmacy

(FREE Weekly delivery of repeat medication to housebound patients)

we take great pride in offering exceptional service

Stockists of

****CLARINS*****DELILAH***** NOBLE ISLE*****MAVALA****

KIRBY BUILDERS MERCHANTS



YOUR LOCAL INDEPENDENT MERCHANT

Tel: 01937 843493

Inglebank, High Street, Boston Spa
www.kirbybuildersmerchants.co.uk

- Bricks, Blocks, Sand & Cement
- Timber, , Fencing & Decking
- Insulation, Plasterboard & Plaster
- Clothing, Tools, Fixings & Fasteners
- Logs, Briquettes & Kindling

Local Electrician

LS22 Electrical Ltd

(Est. 1982 - Collingham)

- ✓ ALL ASPECTS OF DOMESTIC ELECTRICAL INSTALLATIONS
- ✓ NEW INSTALLATIONS, ALTERATIONS & REPAIRS
- ✓ TELEPHONE & COMPUTER CABLE INSTALLATIONS & REPAIRS
- ✓ NO JOB TOO SMALL!!!
- ✓ COMPETITIVE, EFFICIENT, TIDY & FRIENDLY SERVICE

For advice or to arrange a visit call Geoff on

07791 844 305

E: service@ls22electrical.co.uk



G.E. HARTLEY & SON

The Complete Funeral Service

Private Chapels Of Rest
24 Hour On-Call Service
Monumental Masonry
Pre-paid Funeral Plans

WETHERBY 01937 588888

gehartley.co.uk



LOOKING FOR A VENUE FOR YOUR PARTY / FUNCTION?
Collingham Scout Hut
is available for hire. Reasonable rates.
Please contact
collinghamscouthut@gmail.com

PAINTING & DECORATING

by

S.P HARRISON (Est. 1985)
Tel: Barwick 0113 2813956
No VAT 07961 181848

MARTIAL ARTS FOR LIFE



Harewood Village Hall

Collingham Memorial Hall

01423 568067

enquiries@martialartsforlife.co.uk

Harewood Estate Farm shop

situated within in Harewood Holidays reception in the middle of Harewood Estate. Its open 7 days a week selling lots of lovely locally produced food and crafts

Monday – Friday 09.00 – 17.00
Saturdays & Sundays 10.00 – 16.00

Here's just some of our products:

Wines, Beers, Harewood
Gin, Soft drinks, take out
coffee and tea

Meat from the
Estate Livestock.
Homemade ready meals

Oils and Pickles
and Preserves

Fresh eggs, Sour
dough, butter, milk

Yorkshire crisps,
Yorvab Ice cream,
Doggie Ice cream

Lottie Shaw snacks,
Biscuits and
Chocolate bars

Why not pop in and say Hello?

PAUL LAWN

Hairdressing at Home
Est. 36 years
Tel: 07932 633643

Stephenson's Memorial Works LLP

SUPPLIER OF ALL TYPES OF MEMORIALS
GRANITE;; MARBLE;; YORKSHIRE STONE
Website - www.stephensonsmemorials.com
Email: info@stephensonsmemorials.com
Wetherby Road, Harrogate 01423 883583

Painting & Decorating

by Duane Olbison

Interior & Exterior
Wallpaper & Murals

30 years - Free quote - no VAT
Mob 07515 145273
Home 0113 3182644

Email: duaneolbison@googlemail.com
43 Barrowby Avenue

Gillbeck Associates Ltd

Fully qualified accountancy
support at affordable rates.

Accounts
Tax Returns
Bookkeeping
Payroll

Flockton House, Audby Lane, Wetherby. LS22 7FD
david@gillbeck.co.uk Tel: 01937 585432

Printer of this
Magazine for
more than 10
years

CLASS

01937 843 411

www.classoffice.co.uk



office stationery



office furniture



creative design



vibrant print



Collingham Ladies Forum

What Medieval Monks and Nuns didn't want you to know

a talk by
David Banks

at
7.30pm

Monday 27th January

Collingham Memorial Hall

Guests and new members welcome

Collingham Retired Mens' Forum

Every Tuesday 10am
From 7th January

Collingham Methodist Hall

Coffee and Speaker

£3 on the door

Linton Antique Society

Fine Art Printing

an on-line talk by
Daniel Pegg

**Thursday 8th January
8.00pm**

**Community Lunch
Tuesday 7th January
&**

**Tuesday 21st January
from 11.30**

The Memorial Hall
Collingham.

Everyone welcome



Lunchtime Concert

Master of the Keys



Adam Parrish, Pianist

1pm Friday 10th January 2025

TICKETS £6

Light lunches served from 12 noon

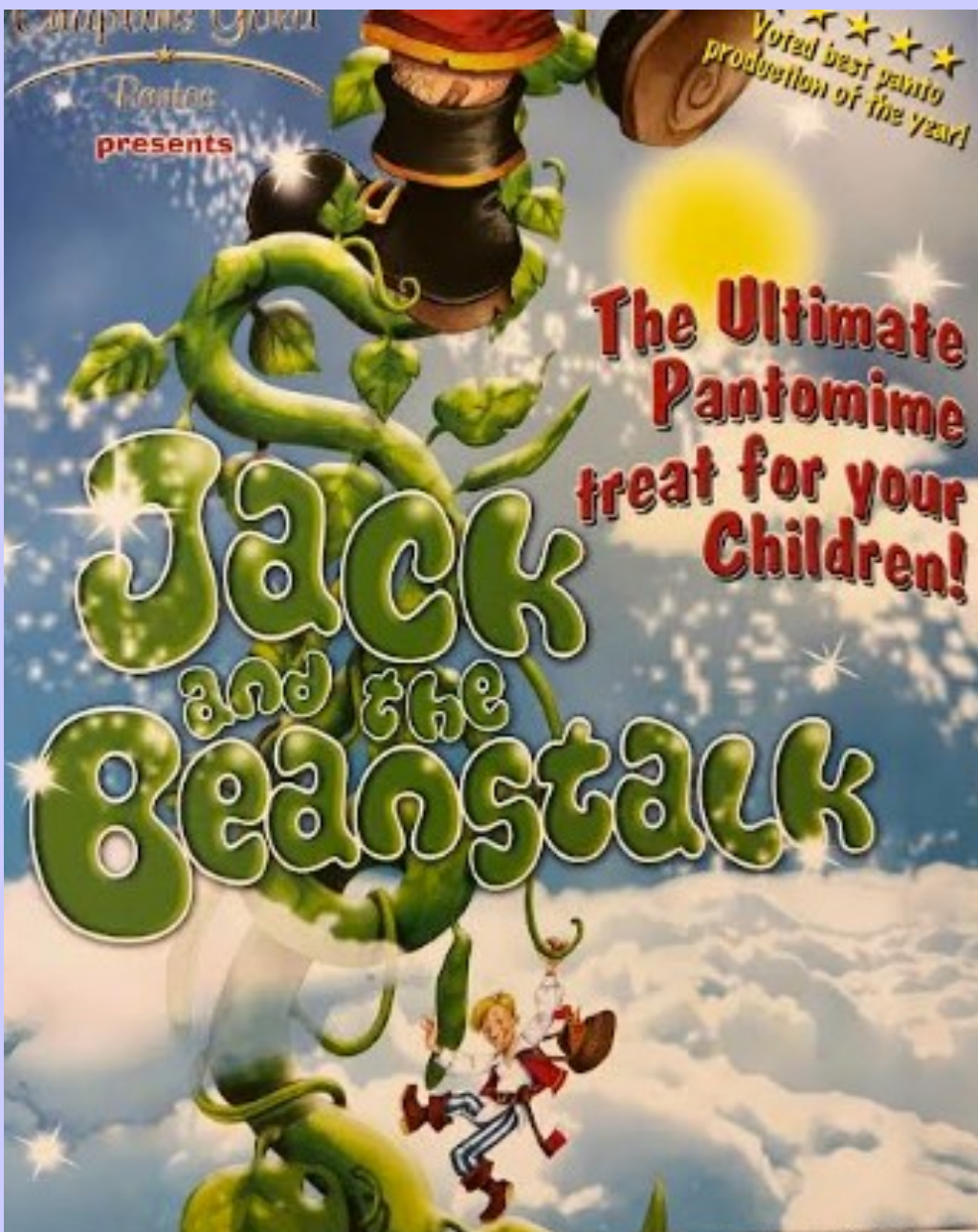
ENQUIRIES: 0113 268 2041

Coffee Morning

**Thursday 9th January
10am - 12noon**

The Green Room
Collingham Memorial Hall

Everyone welcome



HAREWOOD VILLAGE HALL

SUNDAY 5th JANUARY AT 2PM

For further information please ring:

Olga Hanbury on 07968166242 or John Newby on 0113 2886389

Tickets, Adults £10, Child, over 5, £5 and under 5s free, will be available from the beginning of December in the village hall.

Please look for dates and times on the Harewood Community Facebook

Collingham Scouts need your help
See Page 4



**Material for the February Magazine to Diana Lee, Brigham,
School Lane, Collingham LS22 5BD before 10th January
Tel: 07557 884928 email: diana.r.lee1@gmail.com
Advertising Enquiries: Kate Kinsella.
Email: st.oswalds.advertising@gmail.com**